

CREATIVE INSIGHTS

Exploring young people's perspectives on
health inequalities

MRC/CSO Social and Public Health Sciences Unit




Medical
Research
Council



Economic
and Social
Research Council

Arts and
Humanities
Research Council





Between October 2020 and April 2021, Impact Arts worked with 21 young people from across Glasgow who produced artworks in response to the issue of health inequalities. Health inequalities are the unfair and avoidable differences in health across populations and between population groups. Using drawing, printing, photography and collage, they shared their experiences of lockdown; their understandings of the influence of space, place and communities on health; and their priorities for change in relation to health inequalities.

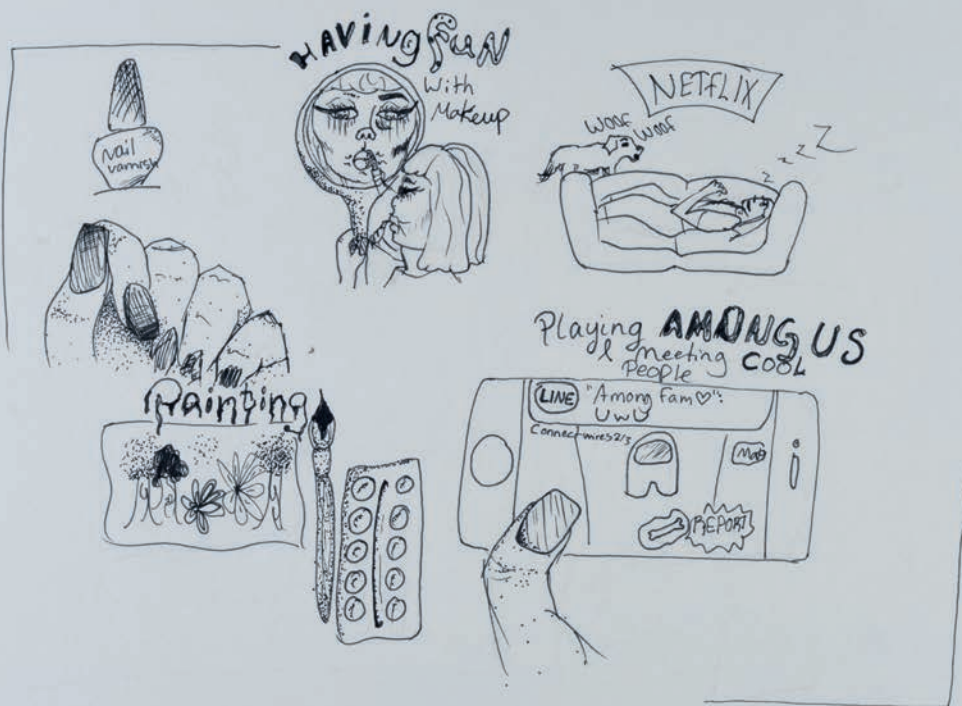
Creative Insights is a research project being conducted at the University of Glasgow, and is supported by the Economic and Social Research Council and the Arts and Humanities Research Council [grant number ES/S001913/1]. The project drew together 39 young people from across Glasgow and Leeds over the course of six online workshops between October 2020 and April 2021.

In this Zine, we share the visual artworks produced during the Creative Insights project run by Impact Arts. Each artist chose whether to share their name, a pseudonym or remain anonymous in connection with their work. The research findings will be shared in 2022.

EXPERIENCES OF THE PANDEMIC

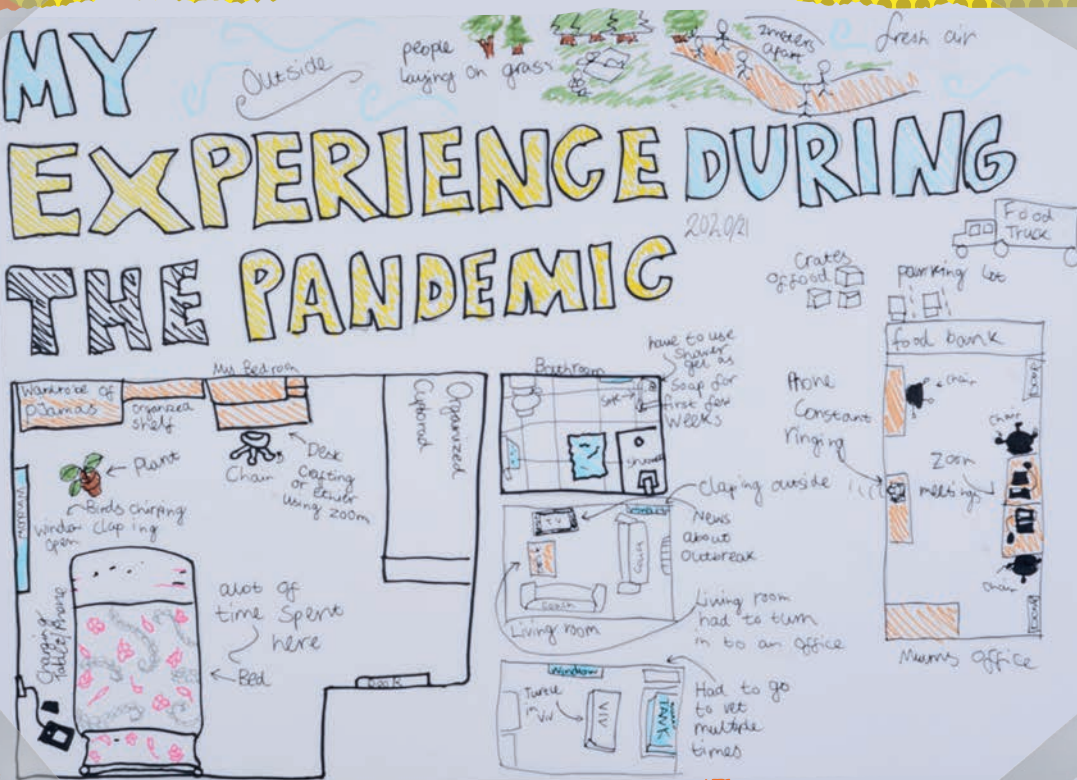
The Covid-19 pandemic was a prominent topic and was discussed during each workshop. We asked young people to share their experiences of lockdown through a series of dialectograms: drawings of the spaces that young people associated with the pandemic.

Many of these artworks depict everyday experiences of school closures, home confinement, and the increased importance of phones and the internet as a social connector. Some drawings also revealed the creativity with which young people repurposed the limited personal space they had. Among other things, some of the dialectograms draw attention to a growing appreciation for green spaces, and the joy in engaging in new hobbies.



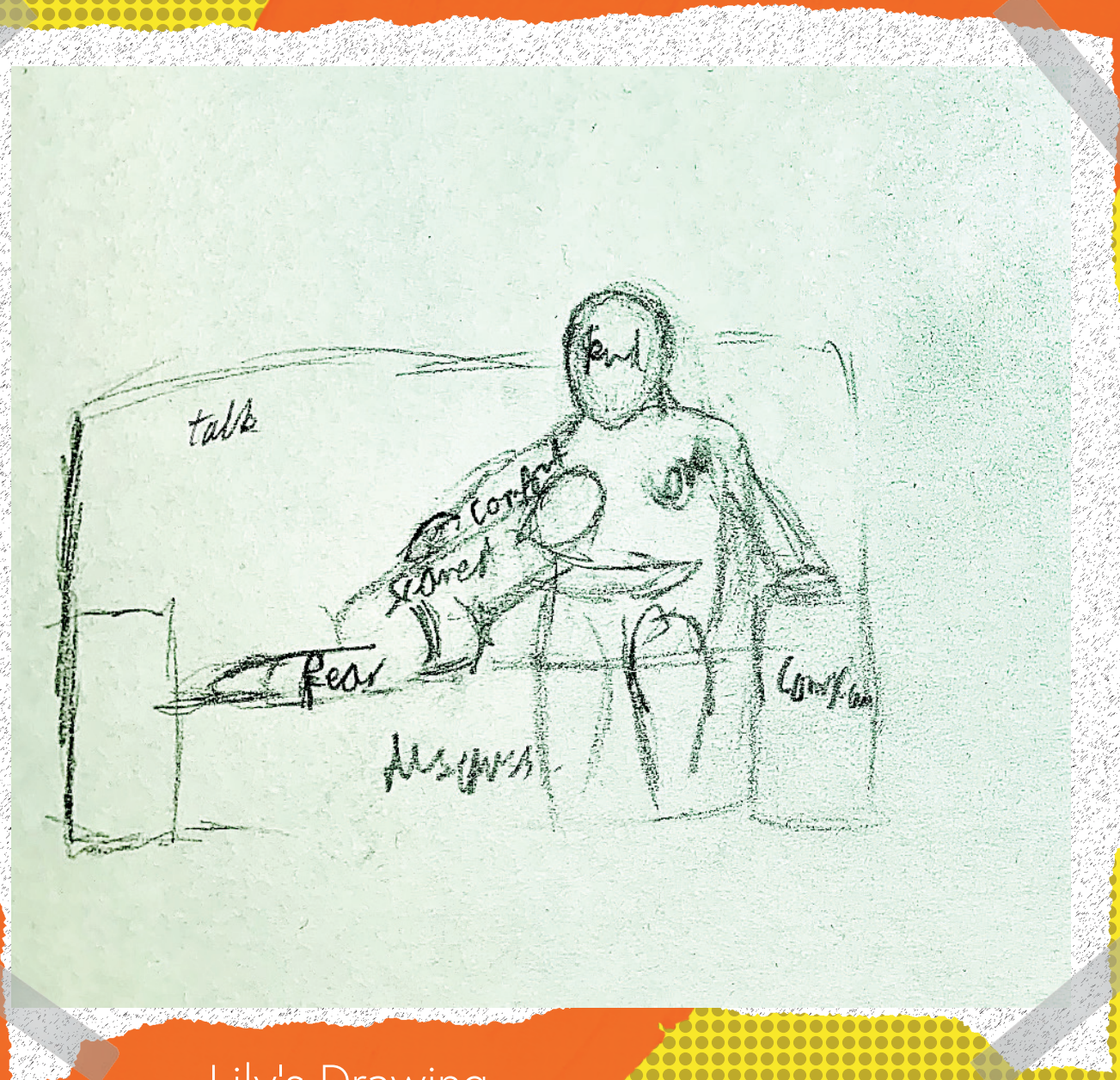
Svanisa's Dialectogram

MY EXPERIENCE DURING THE PANDEMIC



Ailsa's Dialectogram

The importance of family relationships was a recurring topic when young people spoke about their experiences of lockdown.



Lily's Drawing.

SPACES AND PLACES

With the aid of daily photo prompts, we explored the spaces and places around young people. The photographs depict the spaces where young people found comfort and associated with home. The artworks young people submitted ranged from large landscapes to intimate domestic scenes.

David's Photo



Sarah's Photo of the trees



Ailsa's Photo



Sunny's Photo of the sky

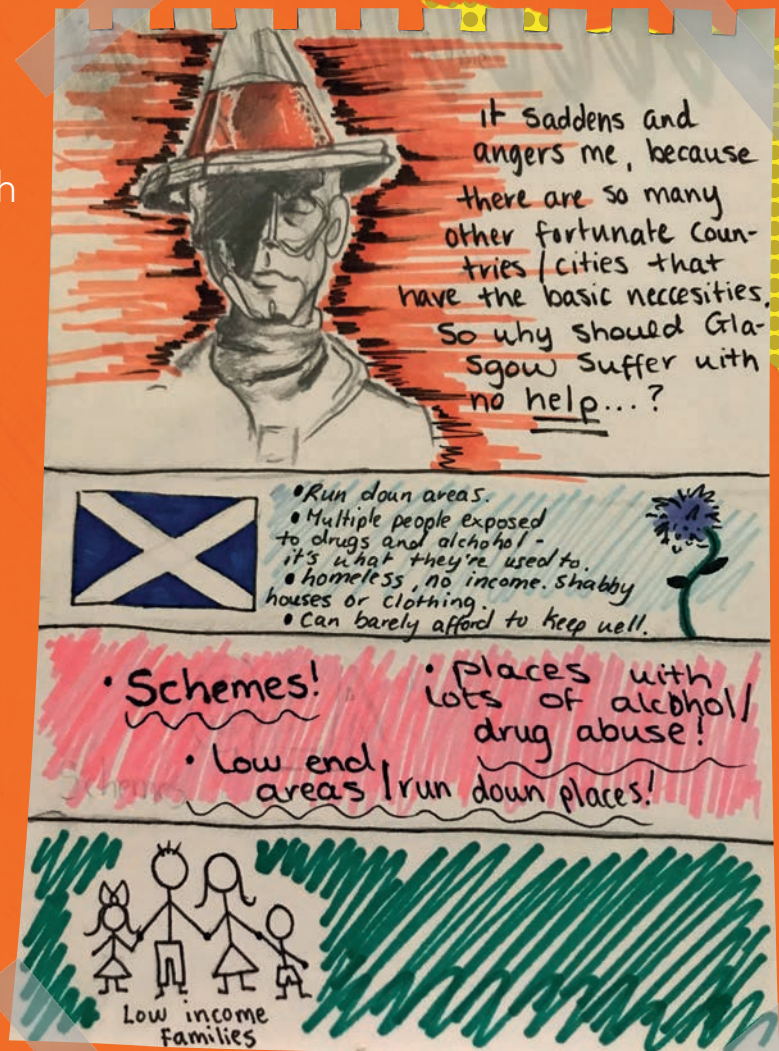
COMMUNITIES AND BELONGING

We worked together with the young people to explore their relationship with their communities through photography and printmaking.

Sometimes this relationship was complex and ambivalent. Oliwia's photo depicts broken glass on the pavement.



Brooklyn's drawing is a poignant illustration of his relationship with Glasgow.

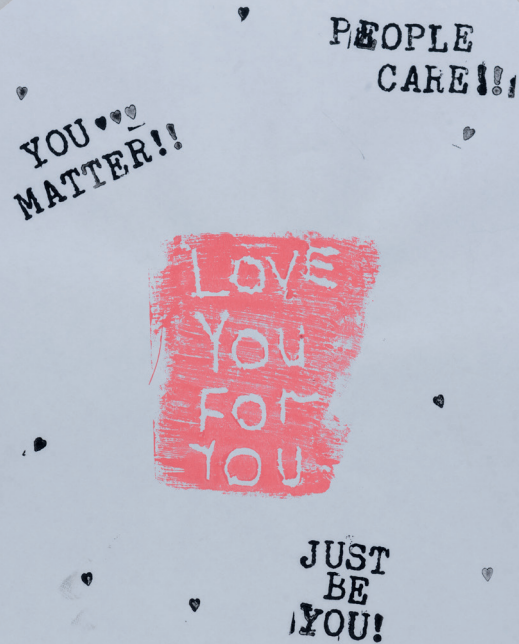


Some of the artworks spoke to the importance of diversity and inclusivity.

Tamara's Prints



Kara's Prints

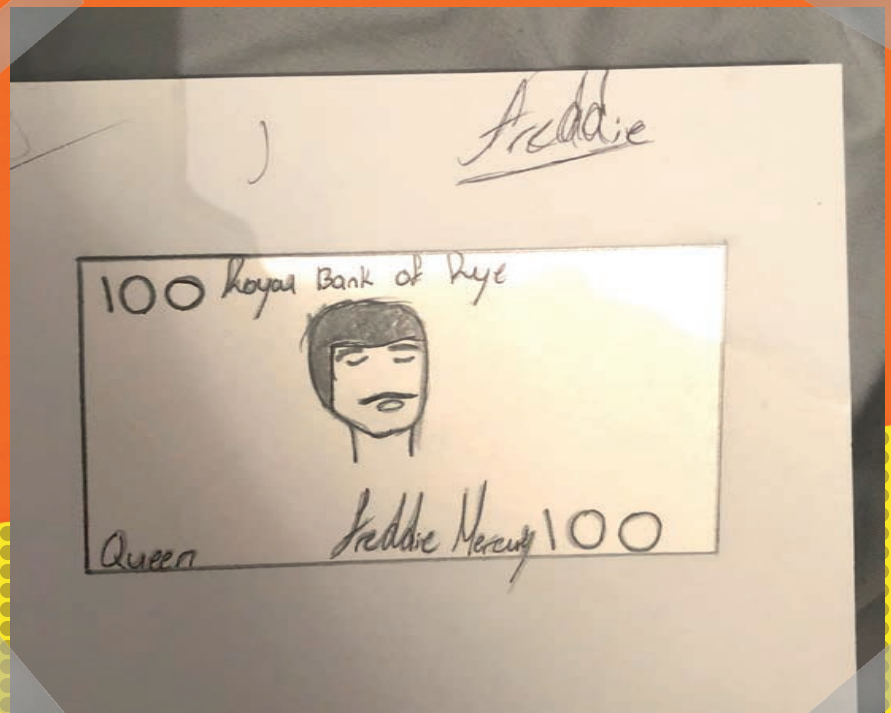


Dys's print combines the colours of Pan-African solidarity with the symbol of the Black Lives Matter movement.



We also spoke with young people about income inequality. We explored young people's thoughts on this issue by asking them to design their own £10 note.

One of the banknotes depicts Freddie Mercury.



Another young person drew herself on the note.

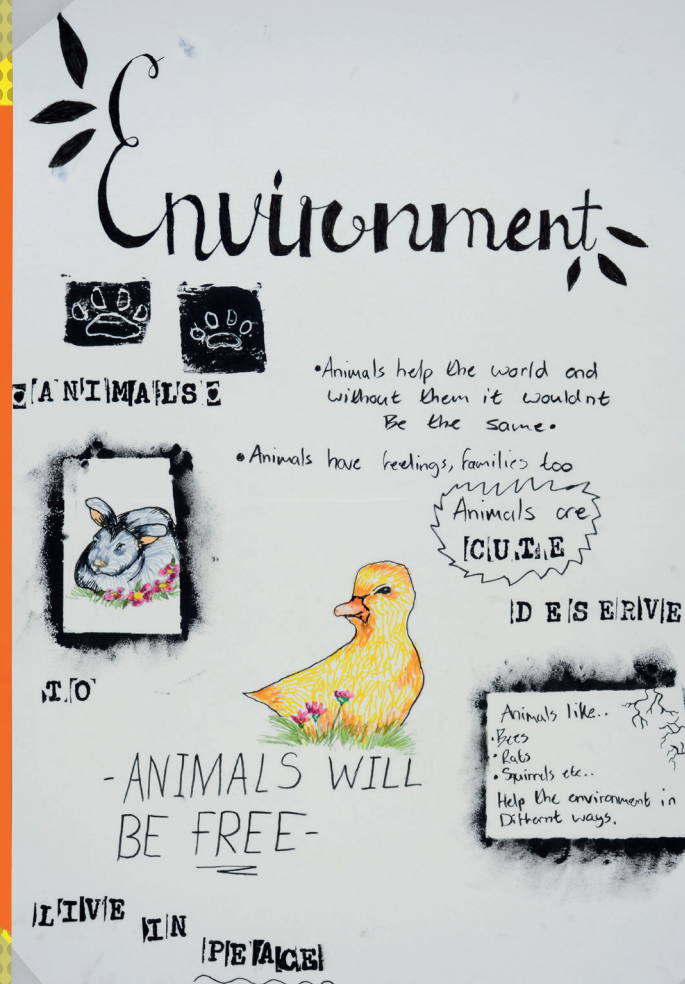
PRIORITIES FOR CHANGE

Over the course of the workshops, we worked with young people to outline solutions for health inequalities, using a wide range of mixed-media techniques, including fabric paintings, drawing, and printmaking. The subsequent artworks express some of the young people's demands, call to action, and visions of a utopistic Glasgow.



Abby's Tote Bag

Pinko's Drawing



Emma's Poster

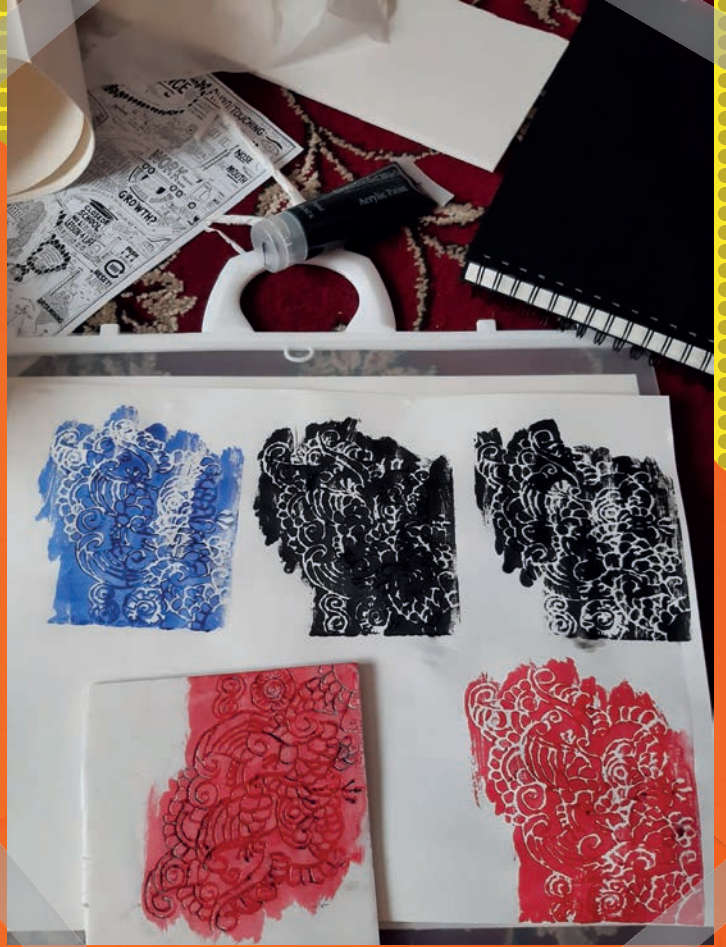
Let US TAKE CHARGE



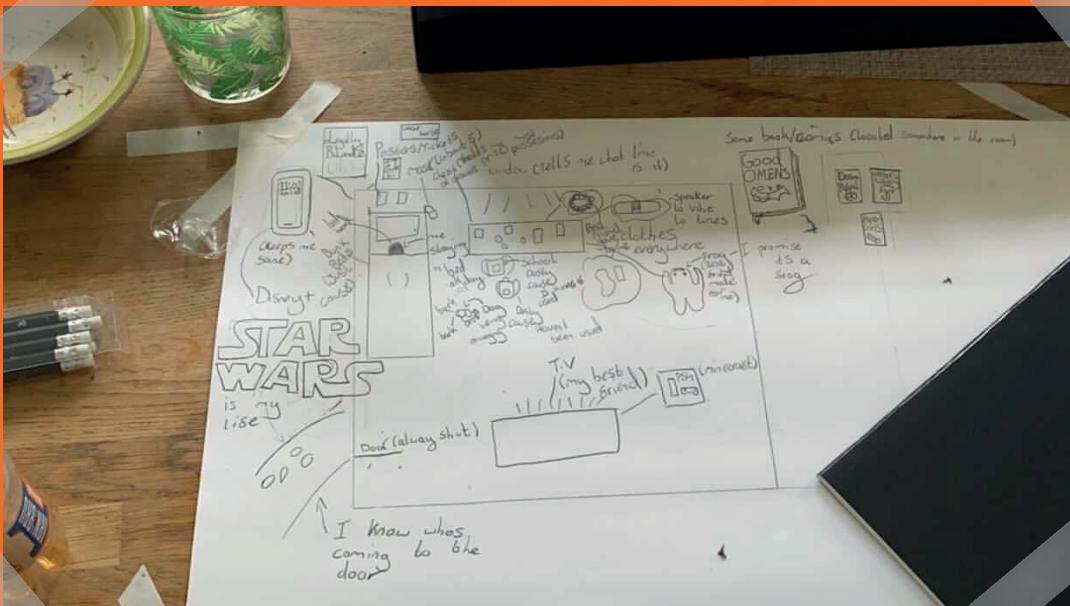
Oliwia's Print

USING VISUAL ART TO EXPLORE HEALTH INEQUALITIES

The pandemic created a particular setting for the workshops: instead of meeting in person, the workshops took place fully online. This meant that Beth and Jack, the creative facilitators had to find ways to help young people make art remotely. Young people set up their work stations in their rooms using the creative material sent to them through the post.



Musfera's Prints



Work station and a work in progress.

"Being invited to facilitate this project felt incredibly exciting. As an artist, it is rare to be able to contribute to a formal research process, and the topic of health inequalities is not something I had previously thought about. Therefore, it felt like together with the participants we were all exploring the topic with fresh eyes. It was great to be able to listen to how young people thought and felt about health inequalities. It was enlightening and important to be part of this. I hope that the artworks created in these workshops provide an insight into young people's perspectives and experiences."

- Impact Arts' Artist co-facilitator Jack Stancliffe

"Looking across these artworks, it is clear how important young people's voices are in contributing to the debates around how best to respond to the enduring existence of health inequalities in Scotland and the UK. Their thoughtful and creative responses span the public policy landscape and we have been extremely lucky to engage with groups of young people around this important topic at this critical time."

- Researcher Gillian Fergie

Many thanks go to all the artists who contributed their insightful work to the project and to the project team: Thu Thuy Phan, Gillian Fergie, Jack Stancliffe, Beth Farmer, Naomi Tattum, and Nicola Burgess. Special thanks to Baran Cakmak for his design of this Zine.

To find out more about Creative
Insights, please visit
gla.ac.uk/creativeinsights